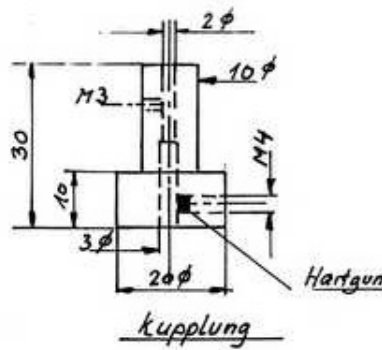
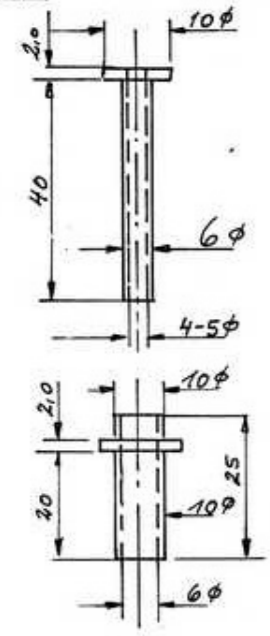


Faßheber mit Getriebe

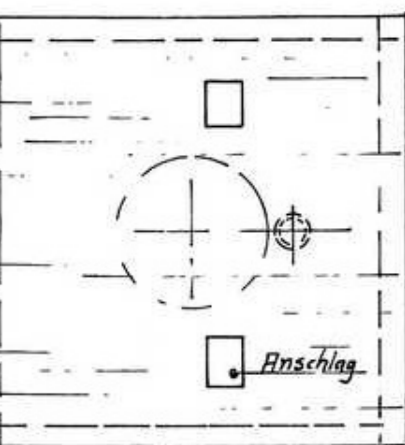
Anschlag



Verstärkung Sp 0,4 mm oder härter

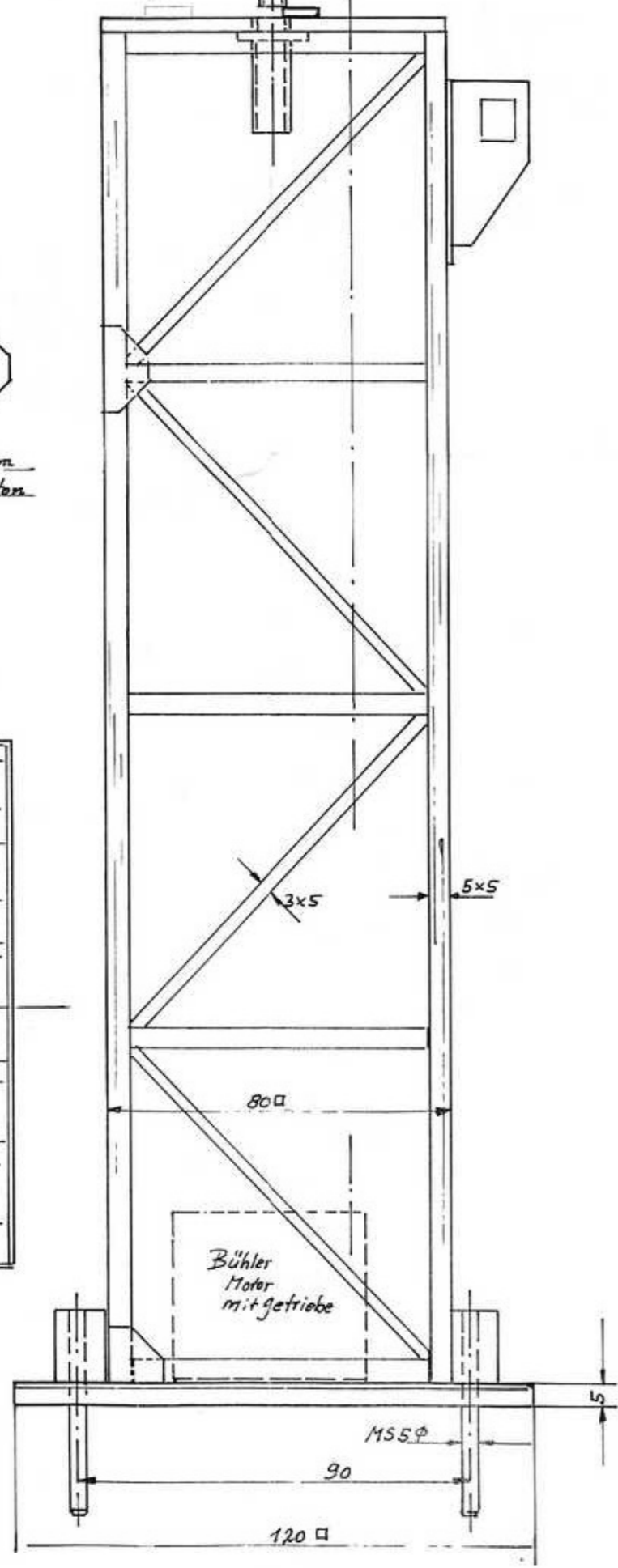
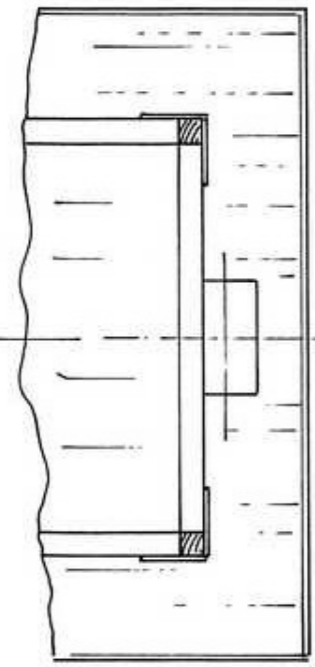
Hartgummi

Kupplung

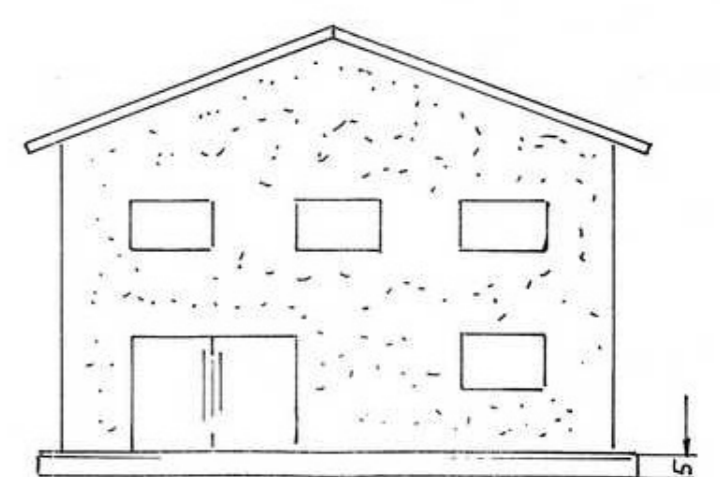
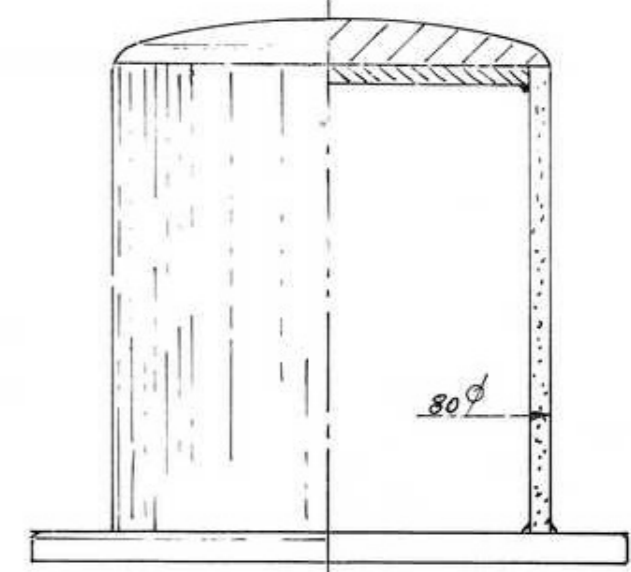
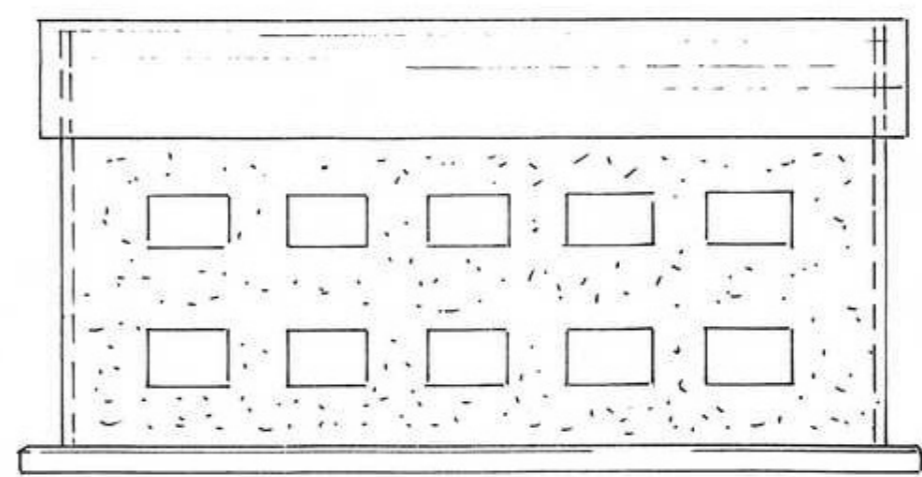
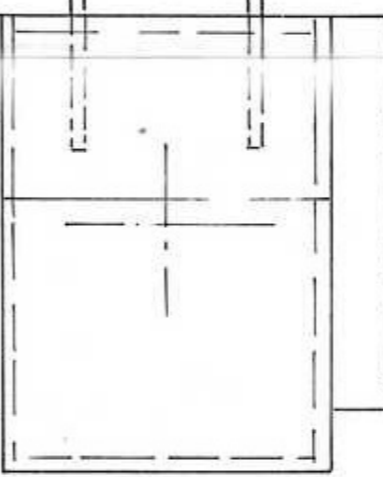
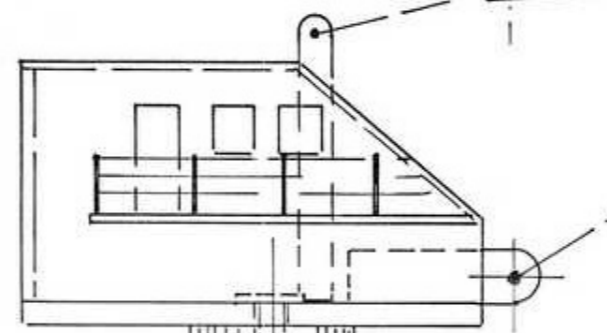


Anschlag

Ansicht 1/4 u



Bühler Motor mit Getriebe



Raum für Windenmotor

je nach Rehsabstand

600

115,2 φ

5x5

3x5

3x5

800

115,2 φ

90

1200

300

115,2 φ

80 φ

5